

CEPS-M-350W
Emergency Inverter Series



The CEPS-M-350W mini inverter is an easy solution for emergency power needs. Designed with LVS advanced Pure Sine Wave technology, the mini inverters provide direct AC power and full illumination to all lighting sources including LED, fluorescent, HID quartz and screw-based LED lamps. With an ultra-wide .5 lead to .5 lag load power factor range, LVS inverters offer unmatched compatibility, allowing existing fixtures to be used for both normal operation and emergency lighting without affecting the aesthetic design of the space. The optional meter panel meets advanced testing and logging requirements of NFPA® 101, Sec. 7.9.3.1.3.

Catalog #		Type
Project		
Comments		Date
Prepared by		

ELECTRICAL SPECIFICATIONS

INPUT

Input Voltage.....120 or 277V, 1-phase 2-wire +10% -15%.
 Input Frequency.....60Hz. +/- 3%
 Input Rating.....438VA
 Input Current.....4.5 amps at 120V or 2 amps at 277V
 Harmonic Distortion.....<10% for resistive load

OUTPUT

Output Voltage.....120 or 277V, 1-phase 2-wire
 Static Voltage.....Load current change +/-2%
 Dynamic Voltage.....+/-10% load step change
 Harmonic Distortion.....< 3% THD for linear load
 Frequency.....60Hz. +/- .05 Hz. during emergency mode
 Load Power Factor......5 leading to .5 lagging
 Inverter Overload.....250% for 16 cycles, 110% continuous
 Output Types.....Normally on, Normally off, or Switched
 Crest Factor.....3.5

OTHER

Compatible Light Sources.....LED, Fluorescent, HID, Incandescent, Quartz
 Transfer Time.....2-10 milliseconds
 Emergency Operation.....90 minutes or more
 Operating Temperature Inverter.....32° - 104° F
 Operating Temperature Battery.....68° - 86° F (per UL-924)
 Battery.....Valve regulated lead acid (VRLA)
 Warranty.....3/10 Prorated



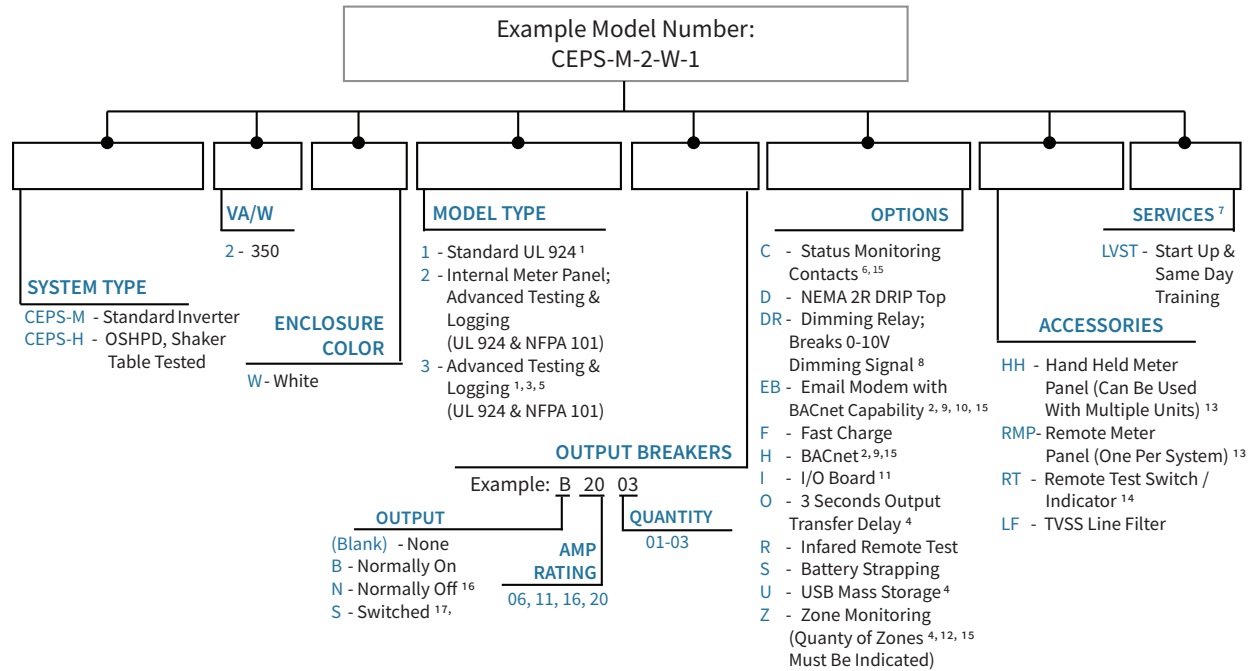
CEPS-M-350W
Emergency Inverter Series
350VA

FEATURES

- PWM/MOSFET Pure Sine Wave inverter technology
- UL 924 self-testing and self-diagnostics
- High crest factor capabilities
- Compatible with all light sources including LED, HID, fluorescent, incandescent, quartz and electronic low-voltage lighting
- Ultra-wide power factor range from .5 leading to .5 lagging
- Also available as LV-OSHPD which is shaker table tested and OSHPD certified and is seismically rated
- Remote Mount - No distance limitations depending on wattage and wire selected
- High efficiencies, runs cool, no fans required
- Input fuse and battery fuse protection
- Three-stage battery charger extends battery life
- Output options normally ON and switched or normally OFF
- Summary Alarm Form C dry contacts
- Field selected input and output voltage 120V or 277VAC
- Indicator lights for charge, ready, inverter and test switch
- Enclosure colors red (standard, white, gray, black)
- Warranty:
 - Electronics - 3 years full (parts only)
 - Battery - 1 year full / 9 years prorated



ORDERING GUIDE



- | | |
|--|---|
| <ol style="list-style-type: none"> 1. No meter panel included 2. Requires model Type 2 or 3 3. Requires HH or RMP option to retrieve data 4. Only available in white cabinet 5. Not OSHPD Rated 6. Not available with options H, I or Z 7. Standard Warranty: Electronics - 3 years full (parts only); Battery - 1 year full / 9 years prorated 8. Requires option I and Switched Output | <ol style="list-style-type: none"> 9. Not available with options C, I or Z 10. Includes BACnet Option H 11. Not available with options C, H or Z 12. Not available with options C, H or I 13. Requires model Type 3 14. Only available on Type 1 15. Not available when using switched output 16. Maximum of 3 switched outputs, each with 10 amp circuit breaker 17. I/O Board required for multiple switched outputs |
|--|---|

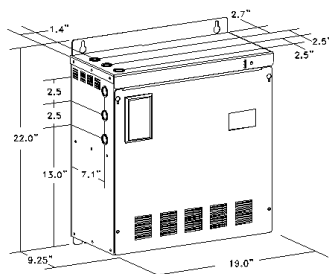
MODEL TYPE 1 STANDARD SYSTEM DESIGN

The Model Type 1 is provided with a self-test feature that runs a test every 28 days and one extended yearly run-time test. The Model Type 1 is not programmable and is controlled by an internal clock embedded in the system electronics. After completion of a successful test, the Ready LED indicator light will be illuminated. If a failure occurs, the Ready LED indicator will flash, alerting maintenance about the issue.

MODEL TYPE 2 AND MODEL TYPE 3 SYSTEM DESIGN

The Illuminator Model Type 2 and 3 offer automated programmable testing. The system comes with a programmable meter panel which is either mounted to the unit, remote mounted or hand-held. It automatically runs the 5-minute run-time tests for 11 months and a yearly 90-minute run-time test. Reduce labor and human error for easy compliance with local inspectors.

DIMENSIONS



Wall Mount Style

Clearances

Top: 6"
Sides: 2"
Front: 36"

Weight

100 lbs

Conduit Knockout Size

7/8" / 1 1/8"

CEPS-M-350	
Run Time (Minutes)	Output Power (Watts)
90 Minutes	350W
120 Minutes	275W
180 Minutes	200W
240 Minutes	150W
300 Minutes	125W
360 Minutes	100W